

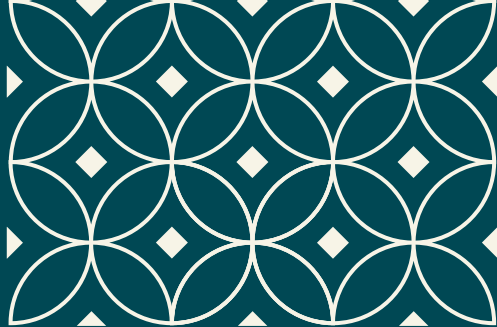


DESSERTS

| | |
|---|-------|
| APRICOT & GINGER CHEESECAKE <i>Raspberry & lavender sorbet</i> (1-wheat,3,6,7,12) | 7.50 |
| CROISSANT & WHITE CHOCOLATE BUTTER PUDDING <i>Cranberries and vanilla cream</i> (1-wheat,3,6,7,8-variety,12) | 7.50 |
| PECAN PIE <i>Salted caramel, chocolate straw</i> (1-wheat,3,6,7,8-pecan,12) | 7.50 |
| GLASTRY FARM ICE CREAMS <i>Selection of ice creams and sorbets</i> (1-wheat,3,6,7,12) | 7.00 |
| CHERRY & CHOCOLATE MOUSSE <i>Chantilly cream</i> (1-wheat,3,6,7,12) | 8.00 |
| WILLIAM PEAR & ALMOND <i>Warm tart with Whiskey ice cream</i> (1-wheat,barley,oat,67,8-almond) | 7.50 |
| ARTISIAN CHEESEBOARD <i>Farmhouse cheese, crackers and chutney</i> (1-wheat,oat,rye,3,6,7,9,10,12) | 12.50 |

Please advise our team members of any dietary requirements you might have. Please note all food is prepared in a busy kitchen environment where we handle a variety of potentially allergenic ingredients.

1-Cereals cont. Gluten, 2-Crustaceans, 3-Eggs, 4-Fish, 5-Peanuts, 6-Soybeans, 7-Milk, 8-Nuts, 9-Celery, 10-Mustard, 11-Sesame Seeds, 12-Sulphites, 13-Lupins, 14-Molluscs



TEA & COFFEE

| | |
|----------------|------|
| ESPRESSO | 3.50 |
| MACCHIATO | 3.90 |
| AMERICANO | 3.50 |
| FLAT WHITE 8OZ | 3.50 |
| CAPPUCCINO | 3.90 |
| LATTE | 3.50 |
| MOCHA | 3.90 |
| HOT CHOCOLATE | 3.90 |
| BREAKFAST TEA | 3.00 |
| SPECIALITY TEA | 3.50 |

THE
· BRASSERIE ·
—