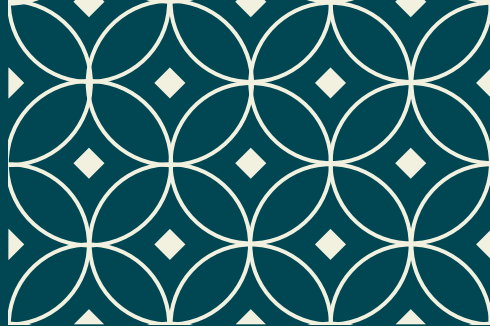




DESSERTS

SUMMER BERRY CHEESECAKE <i>Honeycomb ice cream</i> (1-wheat,3,6,7,8-hazelnut/almond/pecan,12)	7.00
PANNA COTTA <i>Passionfruit sorbet, almond brittle</i> (3,6,7,8-almond,12)	7.50
GLAZED LEMON TART <i>Strawberry sorbet</i> (1-wheat,3,6,7,12)	7.50
GLASTRY FARM ICE CREAMS <i>Selection of ice creams and sorbets</i> (1-wheat,3,6,7)	7.00
APPLE & BLACKBERRY CRUMBLE <i>Warm tart with whiskey ice cream</i> Vegan - (1-wheat,6)	7.00
CHOCOLATE & RASPBERRY MOUSSE <i>Yoghurt ice cream</i> (1-wheat,3,6,7)	8.00
WEST CORK CHEESEBOARD <i>Farmhouse cheese, crackers and chutney</i> (1-wheat,3,6,7,9,10,11,12)	12.50



TEA & COFFEE

ESPRESSO	3.50
MACCHIATO	3.90
AMERICANO	3.50
FLAT WHITE 8OZ	3.50
CAPPUCCINO	3.90
LATTE	3.50
MOCHA	3.90
HOT CHOCOLATE	3.90
BREAKFAST TEA	3.00
SPECIALITY TEA	3.50

THE
· BRASSERIE ·
—